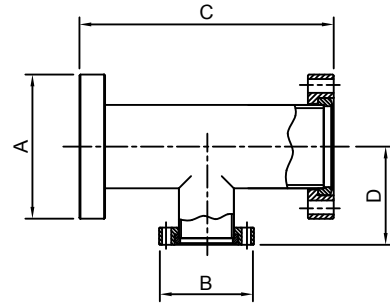


### CF TEE UNEQUAL WITH 2 ROTATABLE FLANGES

- \* MATERIAL: STAINLESS STEEL
- \* BAKEABLE UP TO 450°C
- \* VACUUM RATING 1x10<sup>-11</sup>mbar
- \* WIDE RANGE OF ELBOWS & CROSSES ARE AVAILABLE

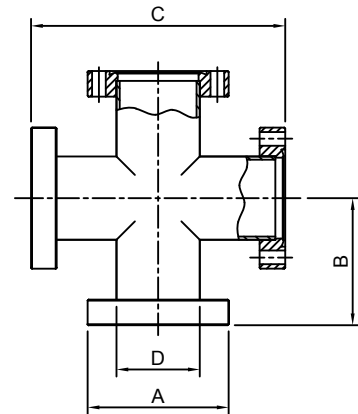
ORDER CODE	MAT'L	NW	A	B	C	D
UTE3516R	304L	35/16	70	34	126	60
UTE6316R	304L	63/16	114	34	210	77
UTE6335R	304L	63/35	114	70	210	77
UTE1016R	304L	100/16	152	34	270	95
UTE1035R	304L	100/35	152	70	270	95
UTE1063R	304L	100/63	152	114	270	95
UTE1516R	304L	150/16	203	34	334	120
UTE1535R	304L	150/35	203	70	334	120
UTE1510R	304L	150/100	203	152	334	120
UTE2035R	304L	200/35	254	70	406	145
UTE2010R	304L	200/100	254	152	406	145
UTE2015R	304L	200/150	254	203	406	145



### CF CROSS 4 WAY WITH FIXED FLANGES

- \* MATERIAL: STAINLESS STEEL
- \* BAKEABLE UP TO 450°C
- \* VACUUM RATING 1x10<sup>-11</sup>mbar
- \* WIDE RANGE OF ELBOWS & TEES ARE AVAILABLE

ORDER CODE	MAT'L	NW	A	B	C	D	BOLT HOLES
X16	304L	16	34	38	76	19	IN LINE
X35	304L	35	70	63	126	38	IN LINE
X38	304L	38	70	63	126	41.3	IN LINE
X63	304L	63	114	105	210	64	IN LINE
X100	304L	100	152	135	270	102	IN LINE
X150	304L	150	203	167	334	152	IN LINE
X200	304L	200	254	203	406	203	IN LINE
X16S	304L	16	34	38	76	19	STRADDLED
X35S	304L	35	70	63	126	38	STRADDLED
X38S	304L	38	70	63	126	41.3	STRADDLED
X63S	304L	63	114	105	210	64	STRADDLED
X100S	304L	100	152	135	270	102	STRADDLED
X150S	304L	150	203	167	334	152	STRADDLED
X200S	304L	200	254	203	406	203	STRADDLED



### CF CROSSES 4 WAY WITH 2 ROTATABLE FLANGES

- \* MATERIAL: STAINLESS STEEL
- \* BAKEABLE UP TO 450°C
- \* VACUUM RATING 1x10<sup>-11</sup> mbar
- \* WIDE RANGE OF ELBOWS & TEES ARE AVAILABLE

ORDER CODE	MAT'L	NW	A	B	C	D
X16R	304L	16	34	38	76	19
X35R	304L	35	70	63	126	38
X38R	304L	38	70	63	126	41.3
X63R	304L	63	114	105	210	64
X100R	304L	100	152	135	270	102
X150R	304L	150	203	167	334	152
X200R	304L	200	254	203	406	203

