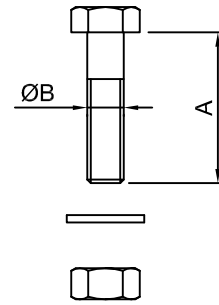


ISO BOLT, NUT & WASHER SETS

ORDER CODE	NW	A	B	PCS/PCK
ISO63NWB	63	40	M8	4
ISO80NWB	80	40	M8	8
ISO100NWB	100	40	M8	8
ISO160NWB	160	50	M10	8
ISO200NWB	200	50	M10	12
ISO250NWB	250	50	M10	12
ISO320NWB	320	60	M12	12
ISO400NWB	400	60	M12	16
ISO500NWB	500	60	M12	16
ISO600NWB	600	70	M12	20



ISO BOLT & WASHER SETS

ORDER CODE	NW	A	B	PCS/PCK
ISO63WB	63	30	M8	4
ISO80WB	80	30	M8	8
ISO100WB	100	30	M8	8
ISO160WB	160	35	M10	8
ISO200WB	200	35	M10	12
ISO250WB	250	35	M10	12
ISO320WB	320	45	M12	12
ISO400WB	400	45	M12	16
ISO500WB	500	45	M12	16
ISO600WB	600	60	M12	20

