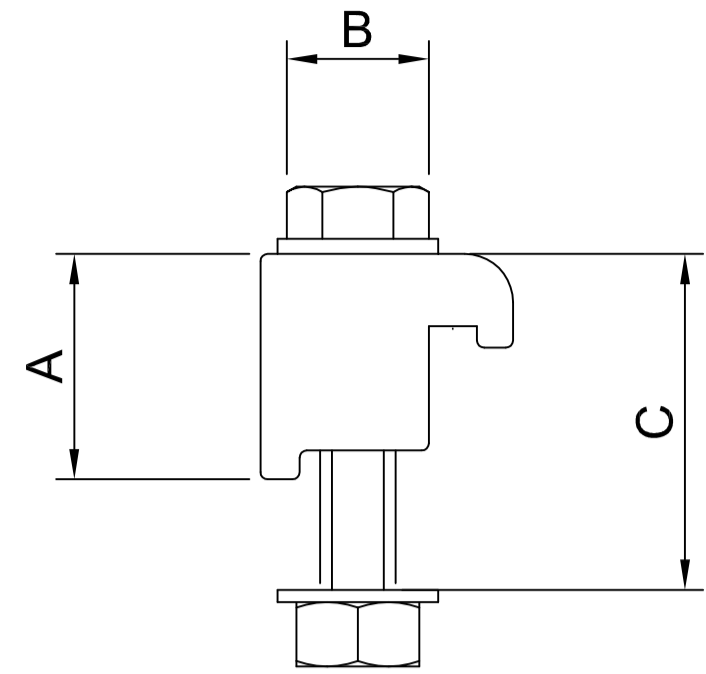


ISO ALUMINIUM WALL CLAMPS, STAINLESS STEEL NUTS, BOLTS & WASHERS

- * MATERIAL: ALUMINIUM
- * BAKEABLE TO 150° C

Used with bolt through bolt holes and centering ring

ORDER CODE	NW	A	B	C
ISO63/100WCNA	63/100	22.5	M8	44
ISO160/250WCNA	160/250	23	M10	50

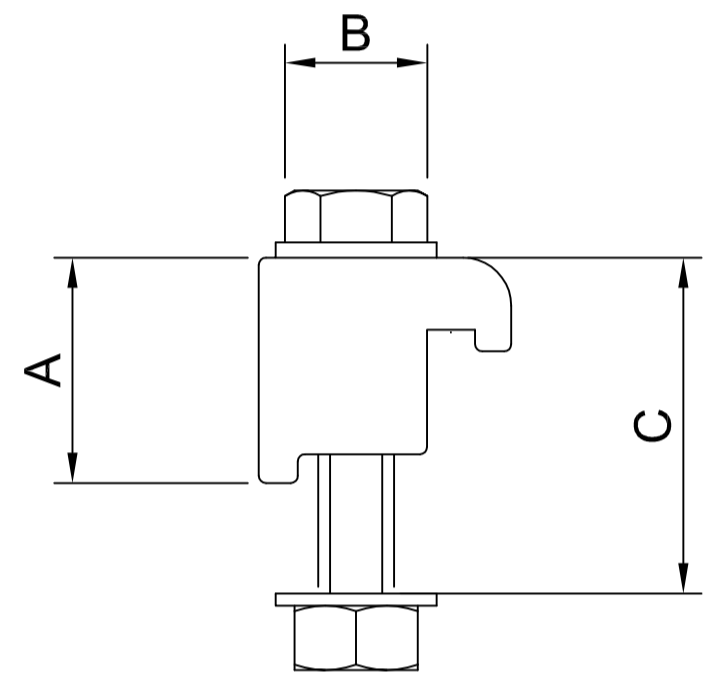


ISO MILD STEEL ZINC PLATED WALL CLAMPS STAINLESS STEEL NUTS, BOLTS & WASHERS

- * MATERIAL: MILD STEEL
- * BAKEABLE TO 150° C

Used with bolt through bolt holes and centering ring

ORDER CODE	NW	A	B	C
ISO63/100WCN	63/100	22.5	M8	44
ISO160/250WCN	160/250	23	M10	50

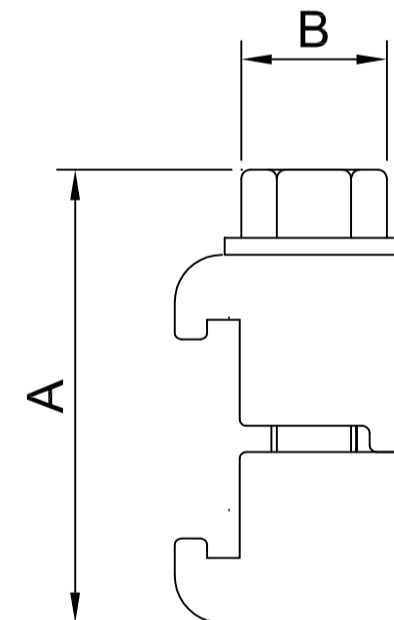


ISO MILD STEEL ZINC PLATED DOUBLE CLAW CLAMPS

- * MATERIAL: ALUMINIUM
- * BAKEABLE TO 150° C

Used with bolt through bolt holes and centering ring

ORDER CODE	NW	A	B
ISO63/250DCMS	63/250	60	M10
ISO320/500DCMS	320/500	76	M12
ISO630DCMS	630	86	M12



ISO STAINLESS STEEL DOUBLE CLAW CLAMPS

- * MATERIAL: 304 STAINLESS STEEL
- * BAKEABLE TO 150° C

Used with centering ring

ORDER CODE	NW	A	B
ISO63/250DCSS	63/100	60	M10

