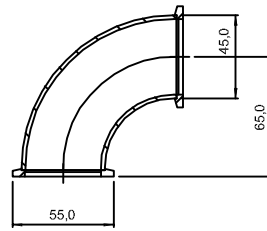


KF 90 DEGREE ELBOW

- * MATERIAL: 304L STAINLESS STEEL
- * BAKEABLE TO 150° C
- * VACUUM RATING 1x10⁻³mbar
- * WIDE RANGE OF CROSSES & TEES ARE AVAILABLE
- * TUBULATED FLANGES ARE AVAILABLE FOR WELDING TO STAINLESS STEEL TUBE

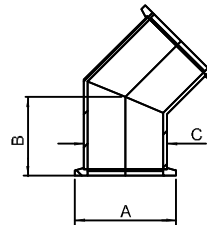
ORDER CODE	NW	A	B	C
EL16K	16	30	40	20
EL25K	25	40	50	28
EL40K	40	55	65	45
EL50K	50	75	70	57



KF ELBOW 45 DEGREE

- * MATERIAL: 304L STAINLESS STEEL
- * BAKEABLE TO 150° C
- * VACUUM RATING 1x10⁻³mbar
- * WIDE RANGE OF CROSSES & TEES ARE AVAILABLE
- * TUBULATED FLANGES ARE AVAILABLE FOR WELDING TO STAINLESS STEEL TUBE

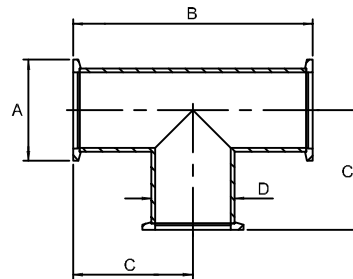
ORDER CODE	NW	A	B	C
EL410KF	10	30	30	14
EL416KF	16	30	23	20
EL425KF	25	40	28	28
EL440KF	40	55	43	45
EL450KF	50	75	51	57



KF EQUAL TEE

- * MATERIAL: 304L STAINLESS STEEL
- * BAKEABLE TO 150° C
- * VACUUM RATING 1x10⁻³mbar
- * WIDE RANGE OF ELBOWS & CROSSES ARE AVAILABLE
- * TUBULATED FLANGES ARE AVAILABLE FOR WELDING TO STAINLESS STEEL TUBE

ORDER CODE	NW	A	B	C	D
TE16K	16	30	80	40	20
TE25K	25	40	100	50	28
TE40K	40	55	130	65	45
TE50K	50	75	140	70	57



KF TEE UNEQUAL

- * MATERIAL: 304L STAINLESS STEEL
- * BAKEABLE TO 150° C
- * VACUUM RATING 1x10⁻³mbar
- * WIDE RANGE OF ELBOWS & CROSSES ARE AVAILABLE
- * TUBULATED FLANGES ARE AVAILABLE FOR WELDING TO STAINLESS STEEL TUBE

ORDER CODE	NW	A	B	C	D	E
UTE2510K	25/10	40	30	50	40	28
UTE2516K	25/16	40	30	50	40	28
UTE4016K	40/16	55	30	65	40	45
UTE4025K	40/25	55	40	65	50	45
UTE5016K	50/16	75	30	70	50	57
UTE5025K	50/25	75	40	70	65	57
UTE5040K	50/40	75	55	70	65	57

